

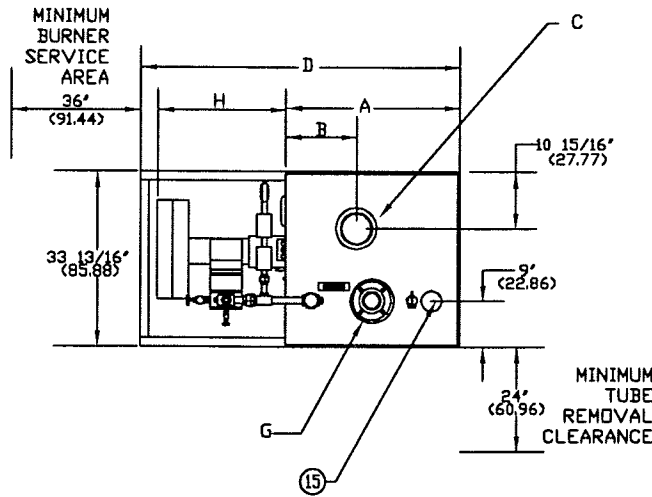
DR SERIES FORCED DRAFT
CALIFORNIA SPECIAL STEAM BOILER REVERSE CONSTRUCTION

EFFECTIVE DATE: 1/29/04

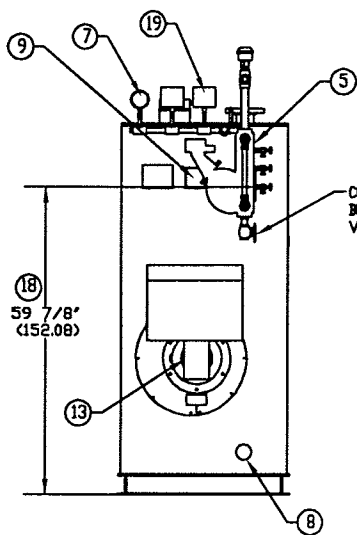
REPLACES: 12/9/03

NOTES:

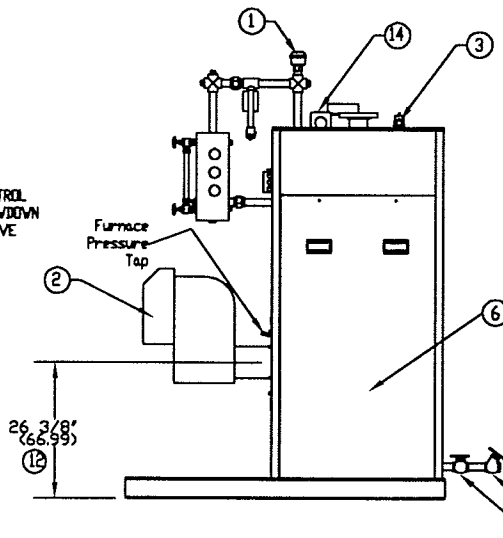
1. ALL DIMENSIONS ARE IN INCHES THOSE IN PARENTHESES ARE CENTIMETERS.
2. LOCATION DIMENSIONS ARE ALL ±1/2'.
3. GAS TRAIN, CONTROL AND BURNER CONFIGURATION WILL VARY DEPENDING ON JOB SPECIFICATIONS & CONDITIONS.
4. DIMENSIONS ARE SUBJECT TO CHANGE WITHOUT NOTICE. CONSULT FACTORY FOR CERTIFIED DIMENSIONS.
5. ALL FLANGES ARE 150# UNLESS OTHERWISE NOTED, FLANGES TO STRADDLE CENTER LINE.



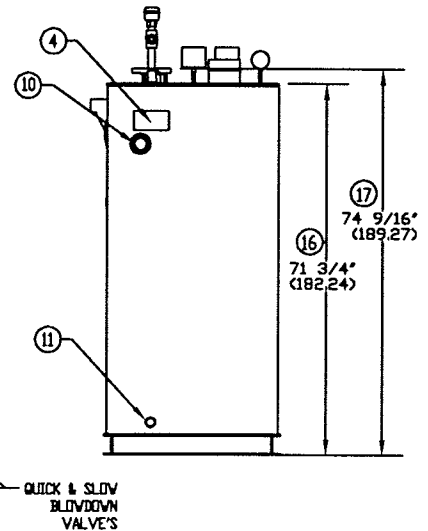
TOP VIEW



FRONT VIEW



RIGHT SIDE VIEW



REAR VIEW

| | | | |
|-----------------------------|----------------------------------|------------------------------|------------------------------|
| 1. PROBE TYPE AUX. L.W.C.D. | 6. JACKET ACCESS PANELS | 11. DRAIN/ BLOWDOWN - 1" NPT | 16. HEIGHT OVER JACKET |
| 2. FORCED DRAFT BURNER | 7. PRESSURE GAUGE | 12. BURNER CENTER LINE | 17. HEIGHT OVER SUPPLY |
| 3. RELIEF VALVE | 8. CLNOUT./INSP. DPNG.-1 1/2"NPT | 13. OIL PUMP LOCATION | 18. MINIMUM SAFE WATER LEVEL |
| 4. ASME NAMEPLATE | 9. ELEC. ENCLOSURE - | 14. LIFTING LUG | 19. PRESSURE CONTROLS |
| 5. LWCO/PUMP CONTROL - 157 | 10. CLNOUT./INSP. DPNG. - 2" NPT | 15. FEED CONNECTION 2" NPT | |

| | |
|----------------------|------------------|
| BOILER MODEL | DR400 |
| A-LENGTH OVER JACKET | 33 3/4' (85.72) |
| B-FLUE LOCATION | 13 3/4' (34.92) |
| C-FLUE DIAMETER | 6' (15.24) |
| D-LENGTH OVER BASE | 62 1/8' (157.79) |
| G-SUPPLY NOZZLE SIZE | 3' (7.62) |
| H-BURNER EXTENSION | 26' (66.04) |



BRYAN BOILERS

783 NORTH CHILI AVE
PERU, INDIANA 46970

ORDER NO.:

ORDER REV. NO.:

FORM NO. 2162

**DR SERIES FORCED DRAFT
CALIFORNIA SPECIAL STEAM BOILER
REVERSE CONSTRUCTION**

| | | |
|--|----------------|---------------------|
| BOILER MODEL | | DR400 |
| INPUT | MBH | 400 |
| | (KW) | 117.2 |
| OUTPUT* | MBH | 320 |
| | (KW) | 93.8 |
| BOILER HORSEPOWER | HP | 9.56 |
| | (KW) | 93.7 |
| TUBE DIAMETER | INCHES | 1.00 |
| | (CM) | 2.54 |
| NUMBER OF TUBES | | 18 |
| PRESSURE VESSEL | | |
| VOLUME | GAL | 31 |
| | (L) | 117.3 |
| HEATING SURFACE | SQ FT | 66 |
| | (SQ M) | 6.1 |
| STEAM OUTPUT | | |
| | LBS/HR | 329 |
| | (KG/HR) | 149.2 |
| OPERATING WEIGHT | LBS | 1,408 |
| | (KG) | 638.9 |
| SHIPPING WEIGHT | LBS | 1,150 |
| | (KG) | 521.6 |
| RELIEF VALVE TYPICAL - 100 PSIG (689.5 KPA) | | |
| QUANTITY | | (1) 6021DC01 |
| SIZE | INCHES | 1/2 x 3/4 |
| | (CM) | 1.27x1.905 |
| CAPACITY-TOTAL | MBH | 643 |
| | (KW) | 188.4 |

* Output based on nominal 80% of input. Actual combustion efficiencies will be higher and fuel dependent.